

**COUNTY OF LOS ANGELES
ROAD DEPARTMENT**

**PRECISE
BENCH MARK LIST**



BELLFLOWER QUAD

1975 ADJUSTMENT

P R E F A C E

The Road Department level net is composed of more than 2,000 miles of levels supporting in excess of 12,000 bench marks. In 1975, a major readjustment of the net was undertaken. To emphasize the complete break with previous elevations, the BY,BG & BL series bench marks have been relabeled CY,CG & CL, respectively.

To facilitate the adjustment, indexing, and distribution of adjusted values of the net, the County territory is divided into 34 quads or areas. For identification purposes each quad is given a name, viz., "Rosemead," "La Mirada," "Santa Fe," etc. When bench marks and elevations in the Road Department net are used, the name of the quad in which the bench mark is located and the date of the adjustment of the elevation must be included in the bench mark description, e.g.,

CG 6234 --L&BN IN CONC HDWL OF DRAIN PIPE UNDER DR 218 FT
NE&18 FT SE C/L INT GRAND AVE & CAMERON AVE MKD (BM)
(COVINA -1975) ELEV. 696.238

Experience indicates that this general adjustment will, for the most part, remain sound for the next 10 years. Updating constrained adjustments will be made in 5 years. It is expected that these updating adjustments will be in the nature of a few hundredths of a foot. When a quad is readjustment, new elevation lists will be published and the date of the readjustment will replace the "1975" at the end of the bench mark description. Two bench marks with different adjustment dates will not normally agree with each other.

The basic accuracy of the net is reflected by an indicated field probable error of plus or minus 0.012 foot per mile of leveling as determined from over 600 conditions of closure. However, many years experience in vertical control in the greater Los Angeles basin and Antelope Valley indicate that because of varying degrees of subsidence and heaving, the true datum is recovered only by obtaining substantial agreement of a number of bench marks.

The users of this net are invited to assist in its maintenance by notifying this Department of cases of obliteration, apparent mistakes in descriptions or elevations, and proven disturbance of bench marks.

DATUM: U. S. Coast and Geodetic Survey Sea Level Datum
of 1929, through the medium of the Los Angeles
County Engineer Precise Level Net.

ABBREVIATIONS USED IN BENCH MARK LISTINGS

ABUT - - - - -	Abutment	EC - - - - -	End of Curve
ALG - - - - -	Along	ENT - - - - -	Entrance
ANG PT - - - - -	Angle Point	FL - - - - -	Floor
B/W - - - - -	Back of Walk	FTG - - - - -	Footing
BCR - - - - -	Beginning of Curb Return	FRWY - - - - -	Freeway
BC - - - - -	Beginning of Curve	F/W - - - - -	Front of Walk
BLDG - - - - -	Building	GAR - - - - -	Garage
EM - - - - -	Bench Mark	HDWL - - - - -	Headwall
BT SPK - - - - -	Boat or Bolt Spike	HSE - - - - -	House
BR CAP - - - - -	Brass or Bronze Cap	HWY - - - - -	Highway
C B - - - - -	Catch Basin	INT - - - - -	Intersection
CTR - - - - -	Center	IP - - - - -	Iron Pipe
C/L - - - - -	Center Line	LT - - - - -	Left
C/L INT - - - - -	Center Line Intersection	LACE - - - - -	L. A. City Engineer
C/L PROD - - - - -	Center Line Produced	LACS - - - - -	L. A. Co. Engineer
CONC - - - - -	Concrete	LAFC - - - - -	L. A. Co. Flood Control
COR - - - - -	Corner	L&BN - - - - -	Lead and Bench Nail
COE - - - - -	Corps of Engineers	L&BR - - - - -	Lead and Brad
CULV - - - - -	Culvert	L&N - - - - -	Lead and Nail
CYN - - - - -	Canyon	L&SPK - - - - -	Lead and Spike
CB - - - - -	Curb	L&T - - - - -	Lead and Tack
CS MON - - - - -	Co. Engineer Monument	MCR - - - - -	Middle of Curb Return
CT SPK - - - - -	Cut Spike	MKD - - - - -	Marked
DR - - - - -	Drive or Driveway	MC - - - - -	Middle of Curve
E/O - - - - -	East of	MON - - - - -	Monument
ECR - - - - -	End of Curb Return	N/O - - - - -	North of

ABBREVIATIONS USED IN BENCH MARK LISTINGS . . . CONTINUED

NR - - - - - Near
OPP - - - - - Opposite
PI - - - - - Point of Intersection
PK&W - - - - - PK Nail and Washer
P/L - - - - - Property Line
POST - - - - - Point on Semi-Tangent
PP - - - - - Power Pole
PVMT - - - - - Pavement
PROD - - - - - Produced
RD - - - - - Road
RDEM - - - - - Road Dept. Bench Mark
RDEM TAG - - - - - Road Dept. Bench Mark Tag
RR - - - - - Railroad
RT - - - - - Right
R/W - - - - - Right of Way
SDMH - - - - - Storm Drain Manhole
SMH - - - - - Sewer Manhole
SPK - - - - - Spike
ST&W - - - - - Spike Tin and Washer
S/O - - - - - South of
TP - - - - - Telephone Pole
USC&GS - - - - - U. S. Coast and Geodetic Survey
USGS - - - - - U. S. Geological Survey
WK - - - - - Walk
W/O - - - - - West of

QUAD

NORWALK

QUAD

ART

ESIA

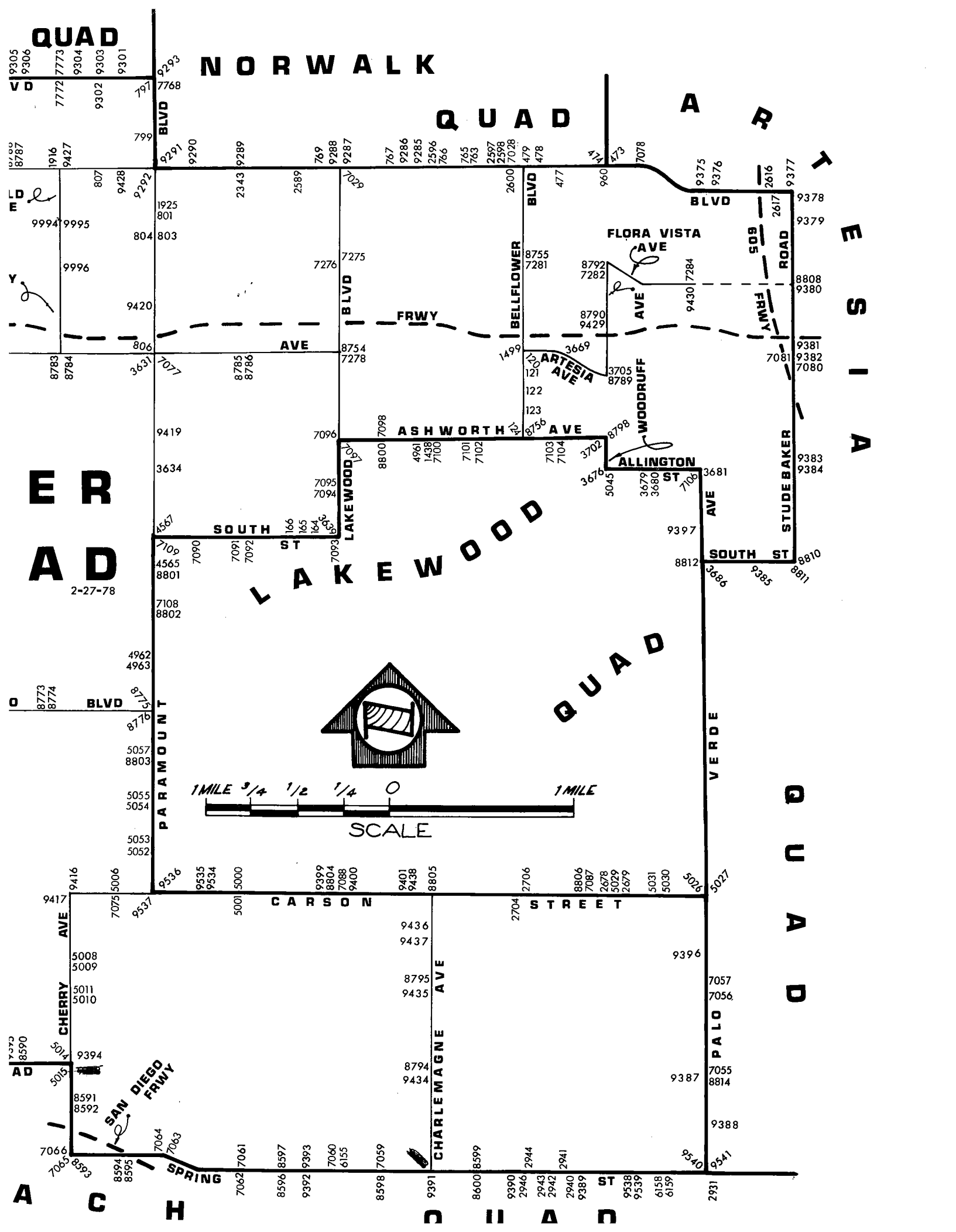
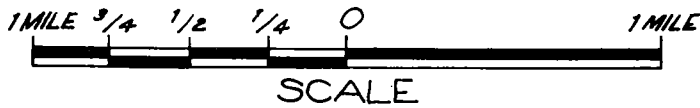
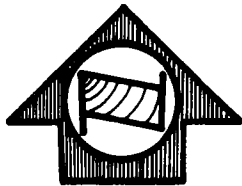
ER AD

2-27-78

LAKEWOOD

QUAD

QUAD



9305
9306
7772
7773
9304
9303
9301
9291
9292
9290
9289
799
8787
1916
9427
807
9428
9292
9994
9995
9996
804
803
804
803
9420
806
8783
8784
3631
7077
8785
8786
9419
3634
7096
7095
7094
7090
7091
7092
7093
7093
7093
7093
4565
4565
8801
7108
8802
4962
4963
8773
8774
8773
8774
8773
8774
5057
8803
5055
5054
5053
5052
9416
5006
5006
5001
5000
9399
8804
7088
9400
9401
9438
8805
2706
8806
7087
2678
5029
2679
5031
5030
5026
5027
9417
7075
9416
5008
5009
5011
5010
9394
8591
8592
7066
8593
8594
8595
7062
7061
8596
8597
9392
9393
7060
6155
8598
7059
9391
8600
8599
9390
2946
2943
2942
2941
2940
9389
9538
9539
6158
6159
2931

7768
799
9291
9290
9289
769
9288
9287
767
9286
9285
2596
766
765
763
2597
2598
7028
479
478
960
960
7078
9378
9379
9378
803
803
804
803
804
803
8754
7278
7275
7276
7275
8755
7281
8792
7282
8790
9429
3669
3705
8789
121
121
122
123
8156
8798
3702
3676
5045
3679
3680
7106
7106
7103
7104
3681
9397
8812
3685
9385
8811
7096
7096
8800
7098
4961
1438
7100
7101
7102
7101
7102
7103
7104
3681
9397
8812
3685
9385
8811
7096
7096
8800
7098
4961
1438
7100
7101
7102
7101
7102
7103
7104
3681
9397
8812
3685
9385
8811

9375
9376
2616
9377
9378
9379
8808
9380
9381
9382
7080
9383
9384
8810
9385
8811
5027
7057
7056
7055
8814
9388
9541
2931

SOUTH

GATE

QUAD

NO

QUAD

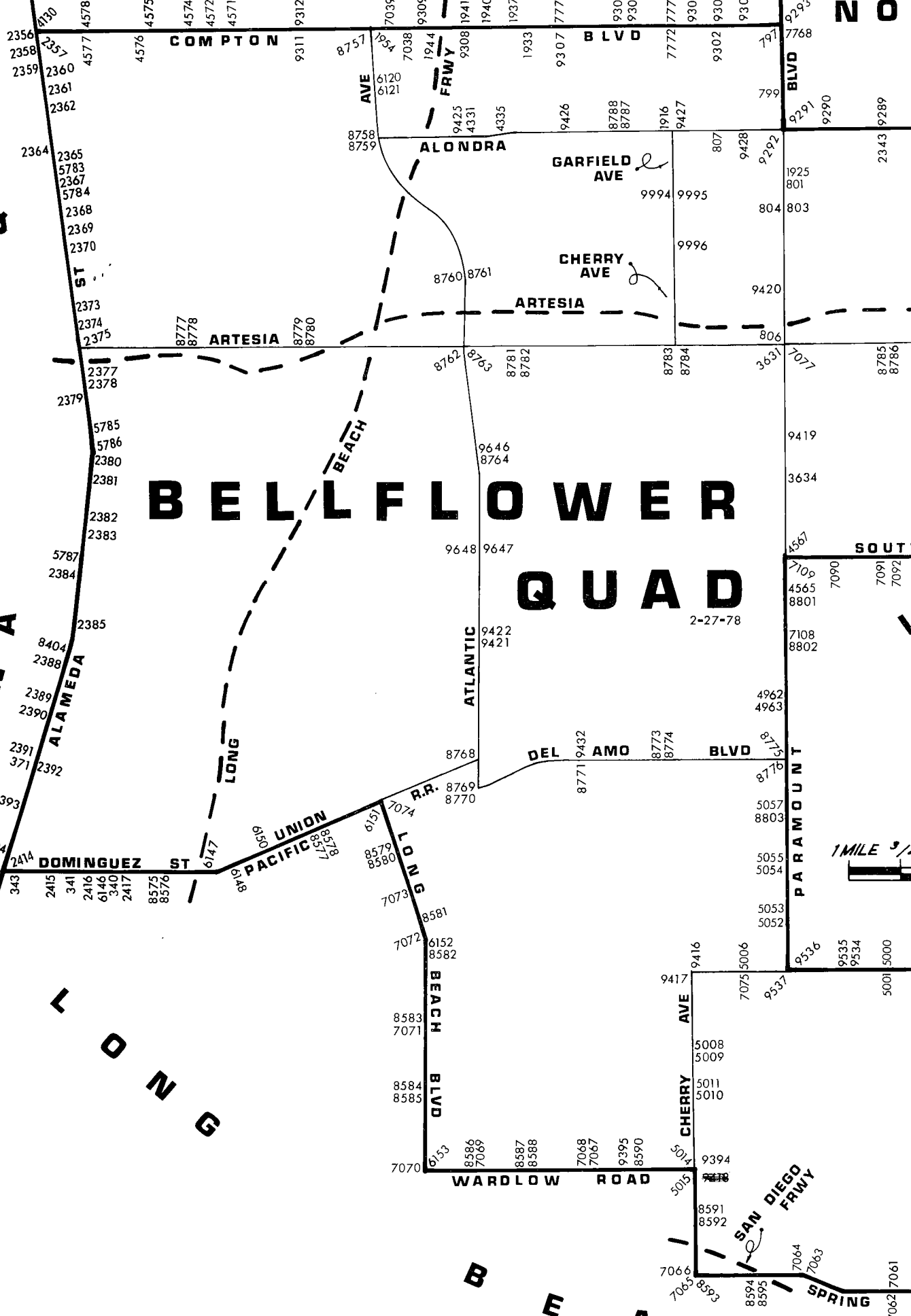
GARDENA

BELLFLOWER
QUAD

SOUTH

LONG

B
M
A
C
H



2356 2358 2359 2360 2361 2362 2364 2365 5783 2367 5784 2368 2369 2370 2373 2374 2375 2377 2378 2379 5785 5786 2380 2381 2382 2383 5787 2384 2385 8404 2388 2389 2390 2391 371 2392 2393 2394 8405 343 2415 341 2416 6146 340 2417 8575 8576 6147 6148 6149 6150 6151 6152 6153 8579 8580 7073 7072 7071 8583 7071 8584 8585 7070 6153 8586 7069 8587 8588 7068 7067 9395 8590 5014 5015 7066 7065 8593 8594 8595 7064 7063 7062 7061

COMPTON BLVD
ALONDRA
ARTESIA
GARDENA
LONG BEACH
BELLFLOWER
ALAMEDA ST
DOMINGUEZ ST
PACIFIC UNION PACIFIC R.R.
ATLANTIC BLVD
DEL AMO BLVD
CHERRY AVE
WARDLOW ROAD
SAN DIEGO FRWY
SPRING

9312 9311 9310 9309 9308 1941 1940 1937 1933 9307 7774 9305 9306 7773 9304 9303 9301 9302 7772 9300 7768 799 9291 9290 9289 2343 9292 9428 807 9428 1925 801 803 9994 9995 9996 9420 806 8785 8786 8762 8763 8781 8782 8783 8784 3631 7077 9419 3634 4561 7099 7090 7091 7092 4565 8801 7108 8802 4962 4963 8775 8776 5057 8803 5055 5054 5053 5052 9336 9337 7075 5006 5008 5009 5011 5010 9394 8591 8592 7066 8593 8594 8595 7064 7063 5001 5000

QUAD-YEAR	ELEV	DESCRIPTION (INCLUDE QUAD AND YEAR IN DESCRIPTION)	BM NUMBER
BELLFLWR (1975)	64.836	L & BR NR CTR CB RET @ SW COR BELLFLOWER BLVD & ARTESIA BLVD 46FT W & 53FT S C/L INT	CY 120
BELLFLWR (1975)	63.546	FCBM 2FT N BCR @ NE COR BELLFLOWER BLVD & RAMONA ST 42FT N & 42FT E C/L INT MKD (74-190)	CY 121
BELLFLWR (1975)	61.808	L&BN 1FT N CB RET @ NW COR CEDAR AVE & BELLFLOWER BLVD 36FT N & 42FT W C/L INT	CY 122
BELLFLWR (1975)	60.151	L&SPK 5FT N/O BCR @ NW COR ROSE ST & BELLFLOWER BLVD 40FT N & 42FT W C/L INT	CY 123
BASELINE (1975)	59.101	L&T 1FT W CB RET @ NW COR ASHWORTH ST & BELLFLOWER BLVD 18FT N & 62FT W/O C/L INT	CY 124
BASELINE (1975)	53.366	L&T W CB 1FT N CB RET @ NW COR OLIVA AVE & SOUTH ST 110FT N & 20FT W C/L INT	CY 164
BASELINE (1975)	52.975	L&T N CB SERVICE RD 2FT W CB RET @ NW COR CASTANA AVE & SOUTH ST 89FT N & 57FT W C/L INT	CY 165
BASELINE (1975)	52.636	L&T N CB SERVICE RD 1FT W CB RET @ NW COR HAYTER AVE & SOUTH ST 89FT N & 56FT W C/L INT	CY 166
BASELINE (1975)	32.706	L&T CTR CB RET @ SW COR SANTA FE AVE & DOMINGUEZ ST	CY 340
BASELINE (1975)	31.352	L&SPK 5FT S CB RET @ SE COR PROSPECT AVE & DOMINGUEZ ST 38FT S & 15FT E/O C/L INT	CY 341
BASELINE (1975)	31.424	L & T IN S CB 30FT W C/L ALLEY 20FT S & 96FT E C/L INT ALAMEDA ST & DOMINGUEZ ST (E BBL)	CY 343
BASELINE (1975)	37.260	L&T NW COR SP SIGNAL SWITCH BOX NO 4972 35FT S C/L DEL AMO BLVD & 25FT E C/L MAIN LINE SPRR	CY 371
BASELINE (1975)	73.117	CS REF MON IN WELL 14IN DN ON NE COR ALONDRA BLVD & WOODRUFF AVE 56FT N & 60FT E/O C/L INT MKD (CLEARWATER K 2A)	CY 473
BASELINE (1975)	73.744	CSBM MON FL ON NW COR ALONDRA BLVD & WOODRUFF AVE 39FT N & 180FT W C/L INT MKD (BM 6-6A1958)	CY 474
BASELINE (1975)	74.723	L&N 18FT E C/L ENCALYPTUS AVE & 80FT S C/L ALONDRA BL	CY 477
BASELINE (1975)	75.185	L & T 15FT E C/L LEAHY AVE & 80FT N C/L ALONDRA BL	CY 478
BASELINE (1975)	75.165	L & T 15FT W C/L LEAHY AVE & 80FT N C/L ALONDRA BL	CY 479

QUAD-YEAR	ELEV	DESCRIPTION (INCLUDE QUAD AND YEAR IN DESCRIPTION)	BM NUMBER
BASELINE (1975)	71.783	L&T 2FT W CB RET NW COR RYON AVE & ALONDRA BLVD 38FT N & 32FT W C/L INT	CY 763
BASELINE (1975)	73.661	L&BN S CB ALONDRA BLVD 6IN E CB RET @ SE COR ALONDRA BLVD & PACIFIC AVE 70FT W PERR	CY 765
BASELINE (1975)	68.586	L & SPK 4FT E CB RET @ NE COR CLARK AVE & ALONDRA BLVD	CY 766
BASELINE (1975)	69.592	L&T C/L INT VIRGINIA DR & ALONDRA BLVD	CY 767
BASELINE (1975)	68.374	L&T C/L INT PITTS AVE & ALONDRA BLVD	CY 769
BASELINE (1975)	72.315	CS MON 17FT W C/L PARAMOUNT BLVD ON C/L COMPTON BLVD MKD (RE 2177 CLEARWATER)	CY 797
BASELINE (1975)	68.556	L&T W CB PARAMOUNT BLVD 2FT N CB RET @ NW COR MADISON ST & PARAMOUNT BLVD	CY 799
BELLFLWR (1975)	65.976	SPK NR C/L PARAMOUNT BLVD 28FT N C/L JACKSON ST	CY 801
BELLFLWR (1975)	65.587	L&T E CB 5FT N BCR @ NE COR PARAMOUNT BLVD & 70TH ST 57FT N & 33FT E C/L INT	CY 803
BELLFLWR (1975)	65.266	CITY OF LONG BEACH MON IN WELL 6IN DN @ DR NR C/L INT PARAMOUNT BLVD & 70TH ST (USE W EDGE)	CY 804
BELLFLWR (1975)	60.783	L&T CTR CB RET 6IN E L&BRAD @ NW COR ARTESIA BLVD & PARAMOUNT BLVD	CY 806
BELLFLWR (1975)	66.893	CT SPK CONC PVMT 17FT S C/L ALONDRA BLVD 35FT W C/L ILLINDIS ST	CY 807
BASELINE (1975)	73.494	L&T IN S CB ALONDRA BLVD 1FT E INTO RET 68FT W C/L WOODRUFF AVE & 38FT S/O C/L ALONDRA BLVD	CY 960
BASELINE (1975)	58.516	L&T CTR CB RET SW COR ASHWORTH ST & CLARK AVE 28FT S & 34FT W/O C/L INT	CY 1438
BELLFLWR (1975)	65.244	L&BR @ NW COR ARTESIA AVE & BELLFLOWER BLVD 5FT W CTR CB RET 43FT N & 43FT W C/L INT	CY 1499
BELLFLWR (1975)	66.415	RDBM TAG N CB 1FT W BCR @ NW COR ALONDRA BLVD & GARFIELD AVE 40FT N & 78FT W C/L INT	CY 1916
BELLFLWR (1975)	65.746	L&T MCR NE COR PARAMOUNT BLVD & JACKSON ST 32FT N & 37FT E C/L INT	CY 1925

QUAD-YEAR	ELEV	DESCRIPTION (INCLUDE QUAD AND YEAR IN DESCRIPTION)	BM NUMBER
BASELINE (1975)	68.487	L&T E CB 15FT S CB RET @ SE COR FAULKNER AVE & COMPTON BLVD 15FT E & 54FT S/O C/L INT	CY 1933
BASELINE (1975)	66.971	CS MON C/L SAN JOSE AVE & APPROX N P/L OF 1ST ALLEY S COMPTON 130FT S C/L INT SAN JOSE AVE & COMPTON BLVD (USE N EDGE)	CY 1937
BASELINE (1975)	67.045	LAFC MON @ C/L INT COMPTON BLVD & SAN ANTONIO AVE MKD (L A CO FLOOD CONT)	CY 1940
BASELINE (1975)	87.978	RDBM TAG IN EAST ABUT. @ NE COR OF COMPTON BLVD BRIDGE OVER LA RIVER 1FT N/O CB FACE 24FT N C/L	CY 1941
BASELINE (1975)	77.606	RDBM TAG IN SOUTH CB COMPTON BLVD 65FT W OF BRIDGE NO 53-823 OVER THE (LONG BEACH FREEWAY) 250FT E GIBSON AVE 25FT S/O C/L COMPTON BLVD	CY 1944
BASELINE (1975)	66.285	L & T CTR CB RET @ SE COR COMPTON BLVD & ATLANTIC BLVD 40 FT S & 40FT E C/L INT	CY 1954
BASELINE (1975)	66.220	L&T CTR CB RET @ SE COR ALONDRA BLVD & DOWNEY AVE 48FT S & 47FT E C/L INT	CY 2343
BASELINE (1975)	68.440	L & BN 28FT N C/L COMPTON BLVD & 60FT W C/L ALAMEDA ST (E BBL) 13FT E/O E RAIL SPRR	CY 2356
BASELINE (1975)	68.635	L & BN 28FT S C/L COMPTON BLVD & 70FT W C/L ALAMEDA ST (E BBL) 5FT E/O E RAIL SPRR	CY 2357
BASELINE (1975)	65.250	L&T 25FT W C/L ALAMEDA ST E BARREL ON C/L PROD LAUREL ST TO THE E	CY 2358
BASELINE (1975)	65.625	L&T W CB @ BCR @ NW COR ALAMEDA ST E BARREL & LAUREL ST TO THE W 25FT W & 32FT N C/L INT	CY 2359
BASELINE (1975)	63.900	STEEL SPK WITH (X) ON TOP CTR S BCR TO DRWY OF COMPTON STREET DEPT NO 458 S ALAMEDA ST 29FT E C/L E BARREL 180FT N MYRRH ST	CY 2360
BASELINE (1975)	64.945	CS MON IN WELL 10IN DN 50FT E C/L SPRR 27FT W C/L ALAMEDA ST E BARREL & 18FT S C/L PROD MYRRH ST TO THE E MKD (BM 5-22A)	CY 2361
BASELINE (1975)	64.462	L&BN W CB ALAMEDA ST E BARREL 12FT E OF 5TH TELEGRAPH POLE N/O ALONDRA BLVD 500FT S/O MYRRH ST 25FT W/O C/L	CY 2362
BASELINE (1975)	64.694	L & T CTR CB RET SE COR ALONDRA BLVD & ALAMEDA ST W BARREL 45FT E & 41FT S C/L INT	CY 2364
BASELINE (1975)	62.496	L&T E CB ALAMEDA ST W BBL ON C/L PROD RAYMOND AVE 27FT E/O C/L ALAMEDA ST	CY 2365

QUAD-YEAR	ELEV	DESCRIPTION (INCLUDE QUAD AND YEAR IN DESCRIPTION)	BM NUMBER
BASELINE (1975)	61.883	L&T E CB ALAMEDA ST W BBL 27FT E/O C/L ON C/O PROD TICHENOR ST	CY 2367
BASELINE (1975)	61.620	L&T E CB ALAMEDA ST W BBL C/L PROD CALDWELL ST 26FT E/O C/L ALAMEDA ST	CY 2368
BASELINE (1975)	61.329	L&T E CB ALAMEDA ST W BBL 27FT E/O C/L ON C/L PROD JOHNSON ST	CY 2369
BASELINE (1975)	61.015	L&T E CB ALAMEDA ST W BBL 27FT E/O C/L ON C/L PROD BENNET ST	CY 2370
BASELINE (1975)	60.222	L&BN E CB ALAMEDA ST OPP MILE POST NO 495 SPRR 0.15MI S/O GREENLEAF BLVD & 22FT E/O C/L ALAMEDA ST	CY 2373
BASELINE (1975)	59.726	STD DISC TOP OF CONC POST 3FT N OF MILE POST NO 495 SPRR & 38FT E C/L SPRR 2FT BELOW TOP OF RAIL & 0.15MI S/O GREENLEAF BLVD 113FT E/O C/L ALAMEDA ST MKD (Q 768 1945)	CY 2374
BASELINE (1975)	62.851	L&BN E CB ALAMEDA ST @ ANGLE POINT OF WINGWALL @ NE COR BRIDGE NO 774 OVER COMPTON CREEK 22FT E C/L & 174FT N C/L CREEK & 400FT S ARTESIA BLVD	CY 2377
BASELINE (1975)	58.101	FC BR CAP @ S END OF WINGWALL @ NE COR SPRR BRIDGE 90FT E C/L ALAMEDA ST & 450FT S C/L ARTESIA BLVD MKD (RBM 44-33)	CY 2378
BASELINE (1975)	62.892	FC BR CAP 5FT S ANGLE POINT WINGWALL SW COR BRIDGE NO 774 ON ALAMEDA ST OVER COMPTON CREEK 28FT W C/L & 600FT S ARTESIA BLVD MKD (BM 44-33)	CY 2379
BASELINE (1975)	51.401	LAFC BR CAP E CB ALAMEDA ST 22FT E/O C/L OPP OLD ENT DOMINGUEZ SEMINARY MKD (RBM 44-32)	CY 2380
BASELINE (1975)	52.775	FC BR CAP SE COR 8X8FT CONC VALVE BOX 58FT E C/L SPRR & 125FT E/O C/L ALAMEDA ST OPP OLD ENT TO DOMINQUEZ SEMINARY MKD (BM 44-32)	CY 2381
BASELINE (1975)	50.492	L&BN W CB ALAMEDA ST 22FT W C/L OPP NE COR 8FT CHAIN LINK FENCE AROUND SO CAL EDISON SUB-STATION PROPERTY 650FT N DOMINGUEZ JCT	CY 2382
BASELINE (1975)	46.636	L&BN W CB ALAMEDA ST W BBL 22FT W/O C/L & 530FT S/O C/L LONG BEACH LINE PERR 37FT N/O TP NO 16767R	CY 2384

QUAD-YEAR	ELEV	DESCRIPTION (INCLUDE QUAD AND YEAR IN DESCRIPTION)	BM NUMBER
BASELINE (1975)	45.832	L&BN E CB ALAMEDA ST W BBL 22FT E/O C/L & 1285FT S/O C/L LONG BEACH LINE PERR 0.25MI N/O LAUREL PARK RD	CY 2385
BASELINE (1975)	42.883	STD USGS DISC IN CONC POST 3IN UP 30FT E C/L SPRR 55FT W C/L ALAMEDA ST E BARREL 0.5MI NLY DEL AMO BLVD 4FT N TP#LU MKD (P 768 1945)	CY 2388
BASELINE (1975)	41.323	L&BN E CB ALAMEDA ST W BARREL 22FT E/O C/L 0.1MI N/O VISTA INDUSTRIA OPP BLDG NO 19722	CY 2389
BASELINE (1975)	40.848	CUT SPK E CB ALAMEDA ST W BARREL 22FT E C/L & 0.25MI N/O DEL AMO BLVD 105FT S/O C/L VISTA INDUSTRIA	CY 2390
BASELINE (1975)	37.788	CS MON IN WELL 2FT N C/L DEL AMO BLVD & 50FT W C/L ALAMEDA W BARREL MKD (COMPTON J7 1942)	CY 2391
BASELINE (1975)	37.657	L&T E CB 2FT S OF END OF CB @ SE COR ALAMEDA ST W BARREL & DEL AMO BLVD 4FT N TP NO 427134H 65FT S & 22FT E C/L INT	CY 2392
BASELINE (1975)	32.617	L&SPK E CB ALAMEDA ST W BARREL 22FT E C/L 275FT N/O C/L EL PRESIDIO ST 1400FT S DEL AMO BLVD	CY 2393
BASELINE (1975)	32.038	L&BN E CB ALAMEDA ST W BARREL 22FT E C/L 23FT PP NO 577803R 900FT N OF DOMINGUEZ ST	CY 2394
BASELINE (1975)	31.612	L & T NR MCR @ SE COR ALAMEDA ST & DOMINGUEZ ST 22FT S & 45FT E/O C/L INT E BAR	CY 2414
BASELINE (1975)	31.293	L & T IN S CB 20FT S C/L DOMINGUEZ ST 1FT W/O DRWY TO HSE NO 2638 DOMINGUEZ ST 0.10MI W/O PROSPECT AVE	CY 2415
BASELINE (1975)	31.945	L&T S CB DOMINGUEZ ST 25FT W DRWY HSE NO 2738 DOMINGUEZ ST (FRONT FIRE PLUG) 0.15MI W/O SANTA FE AVE	CY 2416
BASELINE (1975)	32.780	L & S IN W CB 3FT S BCR @ SW COR DOMINGUEZ ST & SANTA FE AVE 38FT S & 40FT W C/L INT	CY 2417
BASELINE (1975)	67.421	L&T NR W ED OF CONC WK AROUND HSE NO 8700 ALONDRA BLVD 57FT S & 25FT E C/L INT ALONDRA BLVD & HAYTER ST	CY 2589
BASELINE (1975)	67.392	LACS MON 30FT N & 70FT E C/L INT ALONDRA BLVD & CLARK AVE MKD(BM 6-8 1951)	CY 2596
BASELINE (1975)	73.279	L&T N CB 4FT W CB RET @ NW COR ALONDRA BLVD & BLAINE AVE	CY 2597

QUAD-YEAR	ELEV	DESCRIPTION (INCLUDE QUAD AND YEAR IN DESCRIPTION)	BM NUMBER
BASELINE (1975)	73.411	L&T IN N CB 3FT E CB RET @ NE COR ALONDRA BLVD & BLAINE AVE	CY 2598
BASELINE (1975)	74.110	L&BN S CB 1FT W CB RET @ SW COR ALONDRA BLVD & BELLFLOWER BLVD 38FT S & 46FT W C/L INT	CY 2600
BASELINE (1975)	72.999	L&T N CB 1FT E CB RET @ NE COR ALONDRA BLVD SERVICE RD & DUMONT AVE	CY 2616
BASELINE (1975)	73.557	L&T N CB 1FT E OF CB RET @ NE COR ALONDRA BLVD SERVICE RD & LEIBACHER AVE	CY 2617
BASELINE (1975)	44.144	L & BN 1FT E BCR @ NE COR CARSON ST & 1ST ALLEY W WOODRUFF AVE 40FT N & 400FT W C/L INT	CY 2678
BASELINE (1975)	44.642	L & T 2FT W BCR @ NW COR WOODRUFF AVE & CARSON ST 42FT N & 79FT W C/L INT MKD (BM)	CY 2679
BASELINE (1975)	39.856	RDBM TAG S CB 1FT W BCR @ SW COR BELLFLOWER BLVD & CARSON ST 38FT S & 70FT W C/L INT	CY 2704
BASELINE (1975)	39.631	L&T @ CTR CB RET @ NE COR BELLFLOWER BLVD & CARSON ST 50FT N & 50FT E/O C/L INT	CY 2706
BASELINE (1975)	21.472	CS MON (BR SPK IN CONC) IN WELL @ INT PALO VERDE AVE & SPRING ST 18IN DN	CY 2931
BASELINE (1975)	20.996	LACS MON IN WELL 12IN DN 8FT S & 15FT E C/L INT (NO SER RD) SPRING ST & LOMINA AVE MKD (BM 8-35)	CY 2940
BASELINE (1975)	22.543	L&N S CB SPRING ST (N SERVICE RD) C/L LOMINA AVE PROD 13FT S/O C/L N SERVICE RD SPRING ST	CY 2941
BASELINE (1975)	21.804	L & N IN CTR ISL S END PARKWAY SAN ANSELINE AVE 28FT N C/L SPRING ST SERVICE RD	CY 2942
BASELINE (1975)	22.661	L & NAIL IN SD CB SERVICE RD SPRING ST ON C/L PROD CHATWIN AVE 54FT N/O C/L SPRING ST	CY 2943
BASELINE (1975)	22.259	L & BN IN N CB 1FT E BCR 54FT N & 81FT E C/L INT SPRING ST & BELLFLOWER BLVD	CY 2944
BASELINE (1975)	21.348	LACS MON IN WELL 14IN DN W/ CITY OF L B COVER @ C/L INT SPRING ST & BELLFLOWER BLVD (N EDGE)	CY 2946
BELLFLWR (1975)	60.804	L&BR CTR CB RET @ SW COR ARTESIA ST & PARAMOUNT BLVD 54FT S & 45FT W C/L INT	CY 3631
BELLFLWR (1975)	52.286	L&BN E SIDE CONC BASE S GATE POST OF WIRE FENCE 45FT W C/L PARAMOUNT BLVD 6FT NE COR EDISON CO TRANSFORMER ON THE RICHFIELD OIL CO PROPERTY 5900 BLOCK OF PARAMOUNT BLVD	CY 3634

QUAD-YEAR	ELEV	DESCRIPTION (INCLUDE QUAD AND YEAR IN DESCRIPTION)	BM NUMBER
BASELINE (1975)	53.957	L & BN 1FT W BCR @ NW COR LAKEWOOD BL & SOUTH ST 40FT N & 80FT W C/L INT	CY 3639
BELLFLWR (1975)	63.670	L&BR CTR CB RET @ NW COR BIXBY AVE & ARTESIA BLVD 45FT N 26FT W/O C/L INT MKD (BM)	CY 3669
BASELINE (1975)	56.592	L&BN S CB ALLINGTON ST 75FT W/O C/L 28FT S/O C/L WOODRUFF AVE 1FT W/O BCR	CY 3676
BASELINE (1975)	56.824	L&BR W CB 3FT N BCR @ NW COR ALLINGTON ST & CANEHILL AVE 75FT N & 18FT W C/L INT	CY 3679
BASELINE (1975)	57.379	RDBM TAG S CB 1FT E BCR @ SE COR ALLINGTON ST & CANEHILL AVE 30FT S & 60FT E C/L INT	CY 3680
BASELINE (1975)	55.856	CS MON C/L INT PALO VERDE AVE & ALLINGTON ST	CY 3681
BASELINE (1975)	49.686	CS MON 88FT S C/L SOUTH ST 9FT E C/L PALO VERDE AVE	CY 3686
BASELINE (1975)	58.061	L&T 1FT S CB RET @ SW COR ASHWORTH ST & WOODRUFF AVE 45FT S & 40FT W/O C/L INT	CY 3702
BELLFLWR (1975)	62.238	RAM SET S CB 2FT E BCR @ SW COR WOODRUFF AVE & ARTESIA BLVD 40FT S & 73FT W C/L INT	CY 3705
BASELINE (1975)	65.550	CS MON IN WELL 24FT W C/L ALAMEDA ST E BARREL 48FT N C/L COMPTON BLVD MKD (BM 5-21 RE 329 1951)	CY 4130
BELLFLWR (1975)	81.829	FC BR DISC E ABUT BRIDGE B-1132 OVER LA RIV 46FT N/O C/L ALONDRA BLVD & 0.2MI W/O HUNSAKER AVE MKD (BM 4-23)	CY 4331
BELLFLWR (1975)	64.203	L&BN W CB HUNSAKER AVE 40FT W & 85FT N C/L INT ALONDRA BLVD & HUNSAKER AVE (32FT N/O BCR)	CY 4335
BASELINE (1975)	49.892	L&T NR SE COR CONC SLAB @ ENT BLDG NO 5584 PARAMOUNT BLVD 60FT E C/L PARAMOUNT BLVD & 105FT S C/L 56TH ST	CY 4565
BASELINE (1975)	50.915	RDBM TAG 1.5FT E BCR @ NE COR PARAMOUNT BLVD & SOUTH ST 40FT N & 75FT E C/L INT	CY 4567
BASELINE (1975)	67.380	L & SPK 3FT E BCR @ SE COR COMPTON BLVD & BRADFIELD AVE 40FT S & 42FT E C/L INT	CY 4571
BASELINE (1975)	65.896	CITY OF COMPTON MON IN WELL 18IN DP C/L COMPTON BLVD & C/L PROD BRADFIELD AVE N	CY 4572

QUAD-YEAR	ELEV	DESCRIPTION (INCLUDE QUAD AND YEAR IN DESCRIPTION)	BM NUMBER
BASELINE (1975)	66.122	CITY OF COMPTON MON IN WELL 12IN DP @ C/L INT COMPTON BLVD & LONG BEACH BLVD 5FT N OF MON TO THE S	CY 4574
BASELINE (1975)	66.443	RDBM TAG 18FT N BCR @ NE COR COMPTON BLVD & BURRIS AVE 55FT N & 14FT E C/L INT	CY 4575
BASELINE (1975)	66.042	L & T 15FT S BCR @ SW COR COMPTON BLVD & BURRIS AVE 52FT S & 14FT W C/L INT	CY 4576
BASELINE (1975)	64.337	L & SPK CTR CB RET @ SE COR SANTA FE AVE & COMPTON BLVD 31FT S & 44FT E C/L INT	CY 4577
BASELINE (1975)	64.596	L & SPK 1FT N BCR @ NE COR SANTA FE AVE & COMPTON BLVD 42FT N & 40FT E C/L INT	CY 4578
BASELINE (1975)	57.613	CS MON IN WELL 8IN DN ON SW COR CLARK AVE & ASHWORTH ST 38FT S & 30FT W C/L INT MKD (BM 32 3)	CY 4961
BASELINE (1975)	46.660	RDBM TAG W CB 6FT N BCR OF ISLAND @ NW COR PARAMOUNT BLVD & HARDWICK ST 45FT N & 40FT W C/L INT	CY 4962
BASELINE (1975)	46.818	RDBM TAG W CB 2FT S BCR OF ISLAND @ SW COR PARAMOUNT BLVD & HARDWICK ST 37FT S & 43FT W C/L INT	CY 4963
BASELINE (1975)	55.055	USC&GS BR CAP E END CONC BRIDGE 1000FT W LAKEWOOD BLVD NR CTR GOLF COURSE 50FT N C/L CARSON ST MKD (C780 1946)	CY 5000
BASELINE (1975)	55.089	SQ HD BT E END HDWL CONC BRIDGE 1000FT W LAKEWOOD BLVD NR CTR GOLF COURSE 50FT S C/L CARSON ST MKD (U)	CY 5001
BASELINE (1975)	67.129	L&BRAD W CB 1FT N BCR @ NW COR CARSON ST & DEEBOYER AVE 90FT N & 18FT W C/L INT MKD (BM)	CY 5006
BASELINE (1975)	62.161	RDBM TAG N CB 1FT E BCR @ NE COR CHERRY AVE & BIXBY AVE 30FT N & 88FT E SPLIT OF CBS	CY 5008
BASELINE (1975)	62.126	RDBM TAG S CB 3FT E BCR @ SE COR CHERRY AVE & BIXBY AVE 30FT S & 91FT E SPLIT OF CBS	CY 5009
BASELINE (1975)	56.528	LONG BEACH MON IN WELL 8IN DN @ OR NR C/L INT 37TH ST & CHERRY AVE (USE S EDGE)	CY 5010
BASELINE (1975)	56.983	RDBM TAG E CB 74FT E C/L CHERRY AVE & 33FT N C/L PROD 37TH ST	CY 5011

QUAD-YEAR	ELEV	DESCRIPTION (INCLUDE QUAD AND YEAR IN DESCRIPTION)	BM NUMBER
BASELINE (1975)	53.260	CITY OF LONG BEACH MON IN WELL 8IN DN ON NW COR CHERRY AVE & WARDLOW RD 5FT N OF N CB & 45FT W OF W CB MKD (BM 93)	CY 5014
BASELINE (1975)	57.982	USC&GS BM VERTICAL IN NE COR WALL OF LONG BEACH WATER DEPT PUMP HSE SW COR ABANDONED & WARDLOW RD 70FT S & 219FT W/O C/L (BM 1934)	CY 5015
BASELINE (1975)	36.508	RDBM TAG W CB 6FT N BCR @ NW COR PALO VERDE AVE & CARSON ST 82FT N & 30FT W C/L INT	CY 5026
BASELINE (1975)	36.457	RDBM TAG E CB 6FT N BCR @ NE COR PALO VERDE AVE & CARSON ST 82FT N & 30FT E C/L INT	CY 5027
BASELINE (1975)	44.873	CS MON FLUSH W/WLK 2FT NW CTR CB RET @ NW COR CARSON ST & WOODRUFF AVE 57FT N & 48FT W C/L INT MKD (K9 RM NO 3)	CY 5029
BASELINE (1975)	42.118	RDBM TAG SO CB N SER RD 54FT N & 615FT W/O INT CARSON ST & CARFAX AVE (FRONT OF HSE NO 6133) ENT TO WATER PUMP HSE	CY 5030
BASELINE (1975)	41.657	RDBM TAG NO CB N SER RD 82FT N & 615FT W/O INT CARSON ST & CARFAX AVE (FRONT OF HSE NO 6133) ENT TO WATER PUMP HSE	CY 5031
BASELINE (1975)	56.112	L&T E CB 2FT S BCR @ SE COR WOODRUFF AVE & ALLINGTON ST 76FT S & 40FT E C/L INT MKD (BM)	CY 5045
BASELINE (1975)	62.540	RDBM TAG 2FT S BCR @ SW COR PARAMOUNT BLVD & WARWOOD RD 47FT S & 76FT W C/L INT	CY 5052
BASELINE (1975)	62.517	RDBM TAG W CB 2FT N BCR @ NW COR PARAMOUNT BLVD & WARWOOD RD 48FT N & 76FT W C/L INT	CY 5053
BASELINE (1975)	60.561	RDBM TAG W CB 2FT S BCR @ SW COR PARAMOUNT BLVD & GREENTOP ST 46FT S & 76FT W C/L INT	CY 5054
BASELINE (1975)	60.277	RDBM TAG W CB 2FT N BCR @ NW COR PARAMOUNT BLVD & GREENTOP ST 46FT N & 76FT W C/L INT	CY 5055
BASELINE (1975)	54.404	RDBM TAG W CB 2FT N BCR @ NW COR PARAMOUNT BLVD & CENTRALIA ST 47FT N & 76FT W C/L INT	CY 5057
BASELINE (1975)	63.878	R D MON NR N END CONC HDWL CULV 27FT E C/L MAIN TRACK SPRR 45FT W C/L ALAMEDA ST E BARREL 17FT S C/L PROD RAYMOND ST MKD (19)	CY 5783
BASELINE (1975)	63.710	USC&GS MON NR S END CULV HDWL 10FT W C/L SPRR & 70FT E C/L ALAMEDA ST W BARREL 90FT N C/L PROD CALDWELL ST MKD (T 615 1941)	CY 5784

QUAD-YEAR	ELEV	DESCRIPTION (INCLUDE QUAD AND YEAR IN DESCRIPTION)	BM NUMBER
BASELINE (1975)	54.848	MWD MON 3FT E OF E CB ALAMEDA ST 26FT E C/L & 0.5MI S/O ARTESIA BLVD IN S END CONC CULV OPP GATE NO 18011 MKD (56Z 1933)	CY 5785
BASELINE (1975)	52.831	RDBM MON FLUSH 4FT E OF E CB ALAMEDA ST 26FT E C/L & 19FT S PP NO 241565E 61FT S OF S END CONC CULV 0.5MI S ARTESIA BLVD MKD (BM 15)	CY 5786
BASELINE (1975)	49.231	USC&GS MON NEAR N END SFRR CULV HDWL NO 496.25 18FT W/O C/L SFRR TRACKS 67FT E/O C/L ALAMEDA ST & 450FT S/O C/L INT ALAMEDA ST & PERR MKD (F 52 1926)	CY 5787
BELLFLWR (1975)	64.718	L&T E CB 2FT S BCR @ SE COR ATLANTIC AVE & MYRRH ST 27FT S & 36FT E C/L INT	CY 6120
BELLFLWR (1975)	64.718	L&T W CB 1FT S BCR @ SW COR ATLANTIC AVE & MYRRH ST 26FT S & 36FT W C/L INT	CY 6121
BASELINE (1975)	31.473	CS MON 10IN DN 14FT S & 72FT W C/L INT DOMINGUEZ ST & SANTA FE AVE MKD (BM 8-57 RE 63)	CY 6146
BASELINE (1975)	53.772	BT SPK IN CONC ABUT OF UPRR & PERR CROSSING OVER LONG BEACH FREEWAY NR DOMINGUEZ ST 18FT W OF W RAIL PERR & 8FT N OF N RAIL UPRR	CY 6147
BASELINE (1975)	57.015	CS BR DISK CTR S HDWL W CONC ABUT UPRR BRIDGE OVER LA RIVER 10FT E/O W END HDWL MKD (BM 8-55B 1960)	CY 6148
BASELINE (1975)	57.145	CS BR DISK CTR N HDWL E CONC ABUT 6FT E UPRR BRIDGE OVER LA RIV @ MILE POST 17.13 MKD (BM 8-54B 1960)	CY 6150
BASELINE (1975)	43.933	USC & GS DISK 3FT ABOVE GROUND IN E FACE OF W CONC ABUT UPRR BRIDGE OVER LONG BEACH BLVD 1FT S OF N END ABUT & 49FT S /F S CB 48TH ST & 14FT W OF W CB LONG BEACH BLVD MKD (Z-799 1946)	CY 6151
BASELINE (1975)	102.466	4IN BR TABLET IN WELL 18FT N OF S CB LINE PROD SAN ANTONIO DR & 33FT E OF W CB LINE PROD LONG BEACH BLVD MKD (LA COUNTY SURVEY CONTROL SYSTEM TRAVERSE STATION CLEARWATER B-8A RE 2177) @ OR NEAR C/L INT	CY 6152
BASELINE (1975)	87.981	4IN BR TABLET IN WELL 40FT E OF W CB PROD LONG BEACH BLVD & 48FT S/O N CB PROD WARDLOW RD MKD (LA COUNTY SURVEY CONTROL SYSTEM TRAVERSE STATION CLEARWATER B-10 RE 2177) @ OR NEAR C/L INT TO THE E	CY 6153

QUAD-YEAR	ELEV	DESCRIPTION (INCLUDE QUAD AND YEAR IN DESCRIPTION)	BM NUMBER
BASELINE (1975)	24.163	L B CITY MON IN WELL IN LEFT TURN LANE OF NO BBL SPRING ST @ NE COR SPRING ST & LAKEWOOD BLVD 8FT N/O N CB MEDIAN ISL 3FT W/O END ISL 72FT E/O C/L LAKEWOOD BLVD ON C/L SPRING ST MKD (CITY ENG MON-USE N EDGE)	CY 6155
BASELINE (1975)	21.627	L&BRAD IN CHIS SQ W CB 6FT S BCR @ SW COR SPRING ST & SNOWDEN AVE 100FT S & 18FT W C/L INT	CY 6158
BASELINE (1975)	22.997	RDBM TAG S CB 1FT E BCR @ SE COR SPRING ST & SNOWDEN AVE 45FT S & 48FT E C/L INT	CY 6159
BASELINE (1975)	72.729	CS MON 10IN DN @ NW COR ALONDRA BLVD & BELL- FLOWER BLVD 33FT N & 73FT W C/L INT MKD (BM 6-7 1951)	CY 7028
BASELINE (1975)	69.057	CS MON FL @ SE COR ALONDRA BLVD & LAKEWOOD BLVD 42FT S & 187FT E C/L INT MKD (BM 6-9A 1958)	CY 7029
BASELINE (1975)	65.889	CS MON IN WELL 12IN DN @ C/L INT SAN LUIS ST & LIME AVE MKD (CO SUR MON RE 329)	CY 7039
BASELINE (1975)	26.721	FC MON IN WK FL 1FT BACK OF CB FACE @ NE COR 45FT E & 48FT N C/L INT WARDLOW RD & PALO VERDE AVE MKD (074-50900)	CY 7055
BASELINE (1975)	30.440	L&BN 1FT S BCR @ SE COR CONANT ST & PALO VERDE AVE 30FT E & 55FT S C/L INT	CY 7056
BASELINE (1975)	30.523	L&T 1FT E BCR @ NE COR CONANT ST & PALO VERDE AVE 65FT E & 20FT N C/L INT	CY 7057
BASELINE (1975)	22.983	CS MON IN HAND HOLE @ C/L INT SPRING ST & CLARK AVE (USE W EDGE)	CY 7059
BASELINE (1975)	23.133	L B CITY MON IN WELL IN LEFT TURN LANE @ NW COR LAKEWOOD BLVD & SPRING ST 8FT W/O W CB MEDIAN ISL 56FT N/O S END ISL 113FT N/O SPRING ST ON C/L LAKEWOOD BLVD (USE W EDGE)	CY 7060
BASELINE (1975)	35.045	L B CITY MON FL IN CB @ NW COR SPRING ST & REDONDO AVE 40FT N & 45FT W/O C/L INT 3FT W/O BCR MKD (RE 3111-BM-8-40B C/L B 1963)	CY 7061
BASELINE (1975)	35.044	L&BR IN CHIS SQ TOP OF CB @ SW COR SPRING ST & REDONDO AVE 41FT S & 55FT W C/L INT	CY 7062
BASELINE (1975)	46.694	LB CITY MON 14IN DN @ NELY COR SPRING ST & TEMPLE AVE 40FT NLY & 35FT ELY C/L INT MKD (541)	CY 7063

QUAD-YEAR	ELEV	DESCRIPTION (INCLUDE QUAD AND YEAR IN DESCRIPTION)	BM NUMBER
BASELINE (1975)	47.794	L&N N CB SPRING ST 37FT W OF BCR @ NW COR SPRING ST & TEMPLE AVE 80FT W & 40FT N C/L INT	CY 7064
BASELINE (1975)	78.821	L&BR IN CHIS SQ 20FT S BCR @ N END C B @ SW COR SPRING ST & CHERRY AVE 70FT S & 25FT W C/L INT	CY 7065
BASELINE (1975)	75.270	L&BN E CB 1FT S BCR @ NE COR CHERRY AVE & SPRING ST 72FT N & 50FT E C/L INT MKD (BM)	CY 7066
BASELINE (1975)	69.420	L B CITY MON IN WELL 10IN DN IN WK @ NE COR WARDLOW RD & ORANGE AVE 33FT E & 51FT N/O C/L INT MKD (BM NO 87)	CY 7067
BASELINE (1975)	68.864	LB CITY MON 21IN DN @ C/L INT ORANGE AVE & WARDLOW RD MKD (BM-USE W EDGE)	CY 7068
BASELINE (1975)	87.045	C L B MON IN WELL @ C/L INT WARDLOW RD & ATLANTIC AVE(S MON OF 2 MON) USE S EDGE @ ARROW	CY 7069
BASELINE (1975)	88.106	RAMSET W CB LONG BEACH BLVD 35FT N BCR 30FT W & 120FT N C/L INT WARDLOW RD & LONG BEACH BLVD	CY 7070
BASELINE (1975)	110.354	CS TRI MON 34FT W OF E CB LONG BEACH BLVD & 216FT S C/L INT ROOSEVELT RD & LONG BEACH BLVD MKD (B-9-RE 2177-2)	CY 7071
BASELINE (1975)	97.598	USC&GS MON FL 2FT W/O W CB LONG BEACH BLVD & 2FT N/O LIGHT POST #409 20FT S & 36FT W C/L INT LONG BEACH BLVD & COUNTRY CLUB LN (SO ENT) MKD (A-780 1946)	CY 7072
BASELINE (1975)	92.216	CS TRI MON 10IN DN 200FT N C/L INT 44TH ST & LONG BEACH BLVD 34FT W OF E CB MKD (CLEARWATER B-8 RE 2177)	CY 7073
BASELINE (1975)	40.137	CS TRI MON IN WELL 2FT E/O C/L INT ARBOR ST TO THE W & LONG BEACH BLVD MKD (CLEARWATER A-7 RE 2177)	CY 7074
BASELINE (1975)	67.451	L&BN S CB CARSON ST 150FT E C/L UPRR R/W & 42FT S C/L CARSON ST 6FT E DR TO BOWLING ALLEY	CY 7075
BELLFLWR (1975)	60.042	CITY OF LONG BEACH RD HD ADJUSTED DN 6IN W/O CONC WK 5FT N BCR 40FT E ADJUSTED PARAMOUNT BLVD & ARTESIA BLVD	CY 7077
BASELINE (1975)	72.177	CS BR CAP 10IN DN 74FT W C/L MC NAB AVE & 5FT NLY OF N CB HAYFORD ST MKD (BM 9-1A RE 5869 1961	CY 7078
BASELINE (1975)	61.620	L&BN 2FT E BCR @ NE COR ARTESIA BLVD & STUDE- BAKER RD 81FT E & 42FT N C/L INT	CY 7080

QUAD-YEAR	ELEV	DESCRIPTION (INCLUDE QUAD AND YEAR IN DESCRIPTION)	BM NUMBER
BASELINE (1975)	61.141	L&BN 5FT N BCR @ SW COR ARTESIA BLVD & STUDE- BAKER RD 43FT W & 72FT S C/L INT	CY 7081
BASELINE (1975)	42.809	L&BN 1FT E/O BCR @ NE COR CARSON ST & SAN ANSELIN AVE 54FT E & 40FT N/O C/L INT	CY 7087
BASELINE (1975)	44.094	CS MON FL IN WK 45FT E BCR @ NE COR LAKEWOOD BLVD & CARSON ST 40FT N & 108FT E C/L INT MKD (G 9 A RM NO 6 RE 63)	CY 7088
BASELINE (1975)	49.234	L&T S CB 24FT W/O C/L PROD OBISPO AVE & 40FT S C/L SOUTH ST	CY 7090
BASELINE (1975)	50.125	RDBM TAG S CB 38FT W BCR @ SW COR SOUTH ST & DOWNEY AVE 40FT S & 97FT W C/L INT	CY 7091
BASELINE (1975)	49.376	L&T E CB 50FT S BCR @ SE COR SOUTH ST & DOWNEY AVE 117FT S & 31FT E C/L INT	CY 7092
BASELINE (1975)	53.234	RDBM TAG W CB 3FT S BCR @ SW COR LAKEWOOD BLVD & SOUTH ST 80FT S & 45FT W C/L INT	CY 7093
BASELINE (1975)	55.073	L&BN W CB SERVICE RD 1FT S BCR @ SW COR HEDDA ST & LAKEWOOD BLVD 47FT S & 89FT W C/L INT MKD (BM)	CY 7094
BASELINE (1975)	55.160	L&BRAD W CB SERVICE RD 1FT N BCR @ NW COR LAKE- WOOD BLVD & HEDDA ST 47FT N & 89FT W C/L INT	CY 7095
BASELINE (1975)	56.438	L&BRAD W CB SERVICE RD 5FT N BCR @ SW COR LAKE- WOOD BLVD & ASHWORTH ST 40FT S & 90FT W C/L INT	CY 7096
BASELINE (1975)	56.053	FC BRS CAP FLUSH E CB SE COR LAKEWOOD BLVD & ASHWORTH ST 23FT S & 57FT E C/L INT MKD (FC BM 74-230 1946)	CY 7097
BASELINE (1975)	57.389	L&T N CB 17 W C/L PROD GRAYWOOD AVE 18FT N C/L ASHWORTH ST	CY 7098
BASELINE (1975)	58.493	FC BRS DISC E CB 5FT N BCR @ NE COR ASHWORTH ST & CLARK AVE 47FT N & 28FT E C/L INT MKD (FCBM 120-200)	CY 7100
BASELINE (1975)	58.099	L&BR N CB 17FT W/O C/L PROD LORELEI AVE 17FT N/O C/L ASHWORTH ST	CY 7101
BASELINE (1975)	58.061	L & BN 1FT E BCR @ SE COR LORELEI AVE & ASHWORTH ST 17FT S & 42FT E C/L INT MKD (BM)	CY 7102
BASELINE (1975)	58.199	L&T N CB C/L PROD DUNROBIN AVE 20FT N C/L ASH- WORTH ST	CY 7103

QUAD-YEAR	ELEV	DESCRIPTION (INCLUDE QUAD AND YEAR IN DESCRIPTION)	BM NUMBER
BASELINE (1975)	58.239	L&BN S CB 1 FT E BCR @ SE COR DUNROBIN AVE & ASHWORTH ST 41FT E & 20FT S C/L INT	CY 7104
BASELINE (1975)	56.348	L&T W CB 3FT S BCR @ SW COR PALO VERDE AVE & ALLINGTON AVE 70FT S & 25FT W C/L INT	CY 7106
BASELINE (1975)	48.590	L&T E CB 8FT N BCR @ NE COR PARAMOUNT BLVD & CANDLEWOOD ST 71FT N & 40FT E C/L INT	CY 7108
BASELINE (1975)	50.709	RDBM TAG E CB 1FT S BCR @ SE COR PARAMOUNT BLVD & SOUTH ST 76FT S & 40FT E C/L INT	CY 7109
BELLFLWR (1975)	62.075	L&BN E CB 45FT N BCR @ NE COR LAKEWOOD BLVD & FLOWER ST ABT 100FT N & 40FT E C/L INT MKD (BM)	CY 7275
BELLFLWR (1975)	61.880	FC BR DISC TOP W CB @ S BCR @ SW COR LAKEWOOD BLVD & FLOWER ST 58FT S & 40FT W C/L INT MKD (BM 75-7C)	CY 7276
BELLFLWR (1975)	58.853	FC BR DISC TOP E CB 40FT S BCR @ SE COR LAKEWOOD BLVD & ARTESIA BLVD 110FT S & 40FT E C/L INT MKD (BM 74-22C)	CY 7278
BELLFLWR (1975)	69.947	L&T E CB 8FT S BCR @ SE COR BELLFLOWER BLVD & FLOWER ST 60FT S & 30FT E C/L INT	CY 7281
BELLFLWR (1975)	66.566	L&T 30FT E C/L WOODRUFF AVE & 20FT N C/L PROD MAPLE ST	CY 7282
BELLFLWR (1975)	67.852	L&T IN CB 20FT S C/L FLORA VISTA ST & 20FT W C/L VIEW PARK AVE	CY 7284
BASELINE (1975)	72.948	RDBM TAG 8FT N BCR INTO CB RET @ SW COR PARAMOUNT BLVD & COMPTON BLVD 59FT S & 40FT W C/L INT	CY 7768
BASELINE (1975)	69.247	RDBM TAG 1FT E BCR @ SE COR COMPTON BLVD & GARFIELD AVE 32FT S & 76FT E C/L INT	CY 7772
BASELINE (1975)	69.146	RDBM TAG 2FT W BCR @ NW COR COMPTON BLVD & GARFIELD AVE 30FT N & 78FT W C/L INT	CY 7773
BASELINE (1975)	69.143	RDBM TAG NR ENT TO C B ON NE COR COMPTON BLVD & ORANGE AVE 70FT N & 18FT E C/L INT	CY 7774
BASELINE (1975)	43.035	CS MON FL 34FT W/O C/L ALAMEDA ST (W BBL) & 347FT S/O CTR LAUREL PARK RD MKD (COMPTON J6 1942) STEEL WITNESS POST 3FT UP 2FT E	CY 8404
BASELINE (1975)	26.864	CS MON FL IN HDWL ON NW COR TYLER ST & ALAMEDA ST 90FT N & 72FT W C/L INT MKD (BM 5-37A 1970)	CY 8405

QUAD-YEAR	ELEV	DESCRIPTION (INCLUDE QUAD AND YEAR IN DESCRIPTION)	BM NUMBER
BASELINE (1975)	33.767	RDBM TAG IN N CB 12FT W/O END & 19FT W/O SPRR TRKS 32FT N & 0.25 MI E/O C/L INT DOMINGUEZ ST & SANTA FE AVE	CY 8575
BASELINE (1975)	34.267	L & T IN N EDGE CONC BASE RR SIGNAL 18FT S & 0.25 MI E/O C/L INT DOMINGUEZ ST & SANTA FE AVE 13FT W/O SPRR TRKS	CY 8576
BASELINE (1975)	36.492	L & BR IN W CB 40FT WLY & 3FT SLY APPROX C/L INT 47TH ST & PACIFIC AVE	CY 8577
BASELINE (1975)	36.561	L & T IN SE COR LIGHT POST BASE #A-11 19FT N & 17FT E APPROX C/L INT 47TH ST & PACIFIC AVE	CY 8578
BASELINE (1975)	53.266	L & T IN E CB 26FT N & 35FT E/O C/L INT LONG BEACH BLVD & 46TH ST	CY 8579
BASELINE (1975)	54.889	L & BR IN W CB SER RD ON C/L PROD 46TH ST & 57FT E/O C/L INT @ LONG BEACH BLVD	CY 8580
BASELINE (1975)	94.439	L & BR NR CTR CB RET @ NE COR LONG BEACH BLVD & 44TH ST 27FT N & 27FT E C/L INT OF SERVICE RD	CY 8581
BASELINE (1975)	102.924	RAMSET IN CHIS SQ IN W CB 3FT S BCR @ SW COR LONG BEACH BLVD & SAN ANTONIO DR 37FT WLY & 90FT SLY C/L INT	CY 8582
BASELINE (1975)	110.266	RAMSET IN W CB 5FT S BCR @ SW COR LONG BEACH BLVD & ROOSEVELT RD 45FT S & 39FT W C/L INT	CY 8583
BASELINE (1975)	95.544	RDBM TAG IN W CB 5FT S DRWY TO BLDG #3711 35FT W & 53FT N APPROX C/L INT LONG BEACH BLVD & 37TH ST	CY 8584
BASELINE (1975)	93.499	L & SQ HD SCREW IN E CB 7FT S BCR @ SE COR LONG BEACH BLVD & 37TH ST 35FT E & 41FT S/O C/L INT	CY 8585
BASELINE (1975)	88.464	L & BR NR CTR CB RET @ SW COR WARDLOW RD & ATLANTIC AVE 34FT S & 34FT W/O C/L INT	CY 8586
BASELINE (1975)	80.449	RDBM TAG IN S CB 4FT W/O BCR @ SW COR WARDLOW RD & CALIFORNIA AVE 28FT S & 40FT W C/L INT	CY 8587
BASELINE (1975)	79.540	RDBM TAG IN E CB 6FT N ECR @ NE COR WARDLOW RD & CALIFORNIA AVE 47FT N & 16FT E/O C/L INT	CY 8588
BASELINE (1975)	63.505	RDBM TAG IN N CB 30FT E/O BCR @ NE COR WARDLOW RD & WALNUT AVE 28FT N & 79FT E/O C/L INT	CY 8590
BASELINE (1975)	54.494	L & BR IN W CB 40FT W & 30FT N C/L INT @ CHERRY AVE & 32ND ST	CY 8591

QUAD-YEAR	ELEV	DESCRIPTION (INCLUDE QUAD AND YEAR IN DESCRIPTION)	BM NUMBER
BASELINE (1975)	53.922	CITY OF L B MON IN WELL 7IN DN ON C/L CHERRY AVE 30FT N C/L 32ND ST	CY 8592
BASELINE (1975)	76.940	LACS MON FL IN WALK @ NW COR CHERRY AVE & SPRING ST 45FT N & 50FT W C/L INT MKD (BM 8-41B 1965)	CY 8593
BASELINE (1975)	58.052	L & BR IN E END CB 2FT W/O BCR @ SW COR SPRING ST & JUNIPERO AVE 46FT S & 61FT W/O C/L INT	CY 8594
BASELINE (1975)	57.083	L & BR IN S CB 1FT E/O BCR @ SE COR SPRING ST & JUNIPERO AVE 46FT S & 62FT E/O C/L INT	CY 8595
BASELINE (1975)	32.977	L & BN IN CONC NOSE ISL NR C/L SPRING ST 41FT W/O INT @ ENT TO U S A 19TH ARTY GROUP AVIATION SECT 4000 SPRING ST 0.1MI W/O SPRING ST UNDER PASS + L B AIRPORT RUNWAY MKD (BM)	CY 8596
BASELINE (1975)	30.823	L & BN IN CONC NOSE ISL NR C/L SPRING ST 20FT E/O INT @ ENT TO U S A 19TH ARTY GROUP AVIATION SECT 4000 SPRING ST 0.1MI W/O SPRING ST UNDER PASS + L B AIRPORT RUNWAY MKD (BM)	CY 8597
BASELINE (1975)	24.815	L & BR IN S CB 7FT W/O BCR @ SW COR SPRING ST & CLARK AVE E EDGE CB 43FT S & 77FT W C/L INT	CY 8598
BASELINE (1975)	23.849	L & BR IN N CB 7FT W/O BCR @ NW COR SPRING ST & RUTGERS AVE 42FT N & 43FT W/O C/L INT	CY 8599
BASELINE (1975)	24.954	L & BR IN SO CB 43FT S & 52FT W/O C/L INT SPRING ST & RUTGERS AVE	CY 8600
BELLFLWR (1975)	59.393	RDBM TAG 40FT W BCR @ NW COR LAKEWOOD BLVD & ARTESIA BLVD 110FT W & 40FT N C/L INT	CY 8754
BELLFLWR (1975)	70.026	L & T 2FT S BCR @ SW COR BELLFLOWER BLVD & FLOWER ST 55FT S & 30FT W C/L INT	CY 8755
BASELINE (1975)	58.864	RDBM TAG 44FT N BCR @ NE COR BELLFLOWER BLVD & ASHWORTH ST 96FT N & 38FT E C/L INT	CY 8756
BASELINE (1975)	65.930	RDBM TAG 1FT S/O BCR @ SW COR ATLANTIC AVE & COMPTON BLVD 38FT W & 76FT S/O C/L INT	CY 8757
BELLFLWR (1975)	64.119	RDBM TAG 36FT N BCR @ NW COR ATLANTIC AVE & ALONDRA BL 112FT N & 42FT W C/L INT	CY 8758
BELLFLWR (1975)	64.444	RDBM TAG 1FT E BCR @ SE COR ATLANTIC AVE & ALONDRA BLVD 40FT S & 71FT E C/L INT	CY 8759
BELLFLWR (1975)	59.588	RAMSET 38FT W C/L ATLANTIC AVE & 456FT N C/L ATLANTIC PL (BETWEEN TWO C B)	CY 8760

QUAD-YEAR	ELEV	DESCRIPTION (INCLUDE QUAD AND YEAR IN DESCRIPTION)	BM NUMBER
BELLFLWR (1975)	59.841	CITY OF LONG BEACH BR MON FL @ NE COR ATLANTIC AVE & ATLANTIC PL 39FT E & 443FT N C/L INT MKD (BM 1028 1967)	CY 8761
BELLFLWR (1975)	55.896	CITY OF LONG BEACH MON IN WELL 12IN DN @ C/L INT ATLANTIC AVE & ARTESIA BLVD (USE NE EDGE)	CY 8762
BELLFLWR (1975)	55.608	CITY OF LONG BEACH MON IN WELL 12IN DN @ PI ATLANTIC AVE 260FT S C/L ARTESIA BLVD	CY 8763
BELLFLWR (1975)	51.300	CITY OF LONG BEACH MON IN WELL 24IN DN @ C/L INT ATLANTIC AVE & HARDING ST	CY 8764
BELLFLWR (1975)	63.578	USC & GS MON FL IN S WALL WEST ABUT OF UPRR BRIDGE OVER ATLANTIC AVE MKD (C789 1946) 5FT S/O C/L RR TRACTS	CY 8768
BELLFLWR (1975)	56.067	RDBM TAG 3FT N BCR @ NW COR ATLANTIC AVE & DEL AMO BLVD 65FT N & 40FT W C/L INT	CY 8769
BELLFLWR (1975)	60.260	L & BRAD 13FT S BCR @ SW COR ATLANTIC AVE & DEL AMO BLVD 73FT S & 40FT W C/L INT	CY 8770
BELLFLWR (1975)	61.014	CITY OF LONG BEACH MON FL 5FT S BCR @ SW COR DEL AMO BL & ORANGE AVE 70FT S & 30FT W C/L INT MKD (BM 155 1965)	CY 8771
BELLFLWR (1975)	55.884	RDBM TAG NW COR DEL AMO BLVD & CHERRY AVE 72FT N & 70FT W C/L INT	CY 8773
BELLFLWR (1975)	53.233	CS MON IN WELL W/LONG BEACH COVER DN 10 IN @ NW COR DEL AMO BLVD & CHERRY AVE 228FT N & 83FT W/O C/L INT 3FT B/W MKD (CLEARWATER 07)	CY 8774
BASELINE (1975)	46.786	L & BRAD 15FT W BCR IN DEPRESSED CB @ SW COR DEL AMO BL & PARAMOUNT BL 42FT S & 82FT W C/L INT	CY 8775
BASELINE (1975)	47.097	CSBM MON FL @ SW COR DEL AMO BL & PARAMOUNT BL 124FT S & 39FT W C/L INT MKD (BM 33-5A 1970)	CY 8776
BELLFLWR (1975)	55.250	RDBM TAG 2FT W BCR @ SW COR ARTESIA BL & SUSANA RD 42FT S & 83FT W C/L INT	CY 8777
BELLFLWR (1975)	55.182	RAMSET 4FT E BCR @ SE COR ARTESIA BL & SUSANA RD 42FT S & 76FT E C/L INT	CY 8778
BELLFLWR (1975)	53.765	RDBM TAG 2FT W BCR @ SW COR ARTESIA BL & BUTLER AVE 42FT S & 40FT W C/L INT	CY 8779
BELLFLWR (1975)	53.776	RDBM TAG 2FT E BCR @ SE COR ARTESIA BL & BUTLER AVE 42FT S & 40FT E C/L INT	CY 8780

QUAD-YEAR	ELEV	DESCRIPTION (INCLUDE QUAD AND YEAR IN DESCRIPTION)	BM NUMBER
BELLFLWR (1975)	53.536	RAMSET 0.7FT S BCR INTO RET @ NW COR ARTESIA BL & ORANGE AVE 65FT N & 33FT W C/L INT	CY 8781
BELLFLWR (1975)	53.845	RAMSET 9FT E BCR @ SE COR ARTESIA BLVD & ORANGE AVE 42FT S & 58FT E C/L INT	CY 8782
BELLFLWR (1975)	54.783	CITY OF LONG BEACH MON FL @ SW COR ARTESIA BL & CHERRY AVE 43FT S & 63FT W C/L INT MKD (BM 150 1970)	CY 8783
BELLFLWR (1975)	54.688	RAMSET 1FT E BCR @ SE COR ARTESIA BLVD & CHERRY AVE 42FT S & 62FT E C/L INT	CY 8784
BELLFLWR (1975)	55.921	CITY OF LONG BEACH MON 4FT W BCR @ SW COR ARTESIA BL & DOWNEY AVE 42FT S & 61FT W C/L INT MKD (BM 149 1970)	CY 8785
BELLFLWR (1975)	55.788	RDBM TAG 2FT N BCR @ NE COR ARTESIA BL & DOWNEY AVE 70FT N & 30FT E C/L INT	CY 8786
BELLFLWR (1975)	64.952	L & BN 45FT S C/L ALONDRA BL & 16FT W C/L PROD PROD TEXACO AVE	CY 8787
BELLFLWR (1975)	65.222	RDBM TAG 0.3FT N BCR @ NW COR ALONDRA BLVD & TEXACO AVE 62FT N & 30FT W C/L INT	CY 8788
BELLFLWR (1975)	61.476	RDBM TAG 39FT W BCR @ NW COR ARTESIA BLVD & WOODRUFF AVE 40FT N & 109FT W C/L INT	CY 8789
BELLFLWR (1975)	63.186	L & T 15FT S BCR @ SW COR WOODRUFF AVE & BEACH ST 63FT S & 32FT W C/L INT	CY 8790
BELLFLWR (1975)	70.716	RDBM TAG 7FT N BCR INTO RET @ SE COR WOODRUFF AVE & FLORA VISTA ST 75FT S & 30FT E C/L INT	CY 8792
BELLFLWR (1975)	26.882	CS MON IN WELL 6IN DN 32FT W/O C/L CHARLEMAGNE & DN C/L WORDLOW RD MKD (BM 32-12 1953)	CY 8794
BELLFLWR (1975)	32.695	CS MON IN WELL @ NE COR CHARLEMAGNE AVE & CONANT ST 29FT N & 136FT E C/L INT MKD (BM 32-11 1953)	CY 8795
BASELINE (1975)	58.361	L & T 2FT N BCR @ NW COR ASHWORTH ST & WOODRUFF AVE 48FT N & 38FT W C/L INT	CY 8798
BASELINE (1975)	57.073	RDBM TAG 1FT S BCR @ SW COR ASHWORTH ST & GRAYWOOD AVE 44FT S & 15FT W C/L INT	CY 8800
BASELINE (1975)	49.081	CITY OF LONG BEACH MON IN WELL 8IN DN @ C/L INT PARAMOUNT BLVD & 55TH WAY (USE N EDGE)	CY 8801
BASELINE (1975)	48.120	RDBM TAG 1FT W BCR @ SW COR PARAMOUNT BLVD & CANDLEWOOD ST 32FT S & 77FT W C/L INT	CY 8802

QUAD-YEAR	ELEV	DESCRIPTION (INCLUDE QUAD AND YEAR IN DESCRIPTION)	BM NUMBER
BASELINE (1975)	55.720	RDBM TAG 7FT S BCR @ SW COR PARAMOUNT BLVD & CENTRALIA AVE 53FT S & 76FT W C/L INT	CY 8803
BASELINE (1975)	44.528	RAMSET 45FT N BCR @ NE COR CARSON ST & LAKEWOOD BLVD 106FT N & 42FT E C/L INT	CY 8804
BASELINE (1975)	38.447	CITY OF LONG BEACH MON FL @ NE COR CLARK AVE & CARSON ST 42FT N & 54FT E C/L INT MKD (CLB 555 1970)	CY 8805
BASELINE (1975)	42.531	RDBM TAG 1FT W BCR @ NW COR CARSON ST & SAN ANSELINA AVE 40FT N & 45FT W C/L INT	CY 8806
BASELINE (1975)	69.261	RDBM TAG IN E CB 2FT N/O BCR @ NE COR STUDEBAKER RD & 166TH ST 42FT E/O & 72FT N/O C/L INT	CY 8808
BASELINE (1975)	50.692	LACS MON FL @ S END OF CB IN W CB 45FT N/O BCR @ NW COR STUDEBAKER RD & SOUTH ST 43FT W & 122FT N/O C/L INT MKD (BM 9-8C 1970)	CY 8810
BASELINE (1975)	50.454	RDBM TAG IN S CB 2FT W/O BCR @ SW COR STUDEBAKER RD & SOUTH ST 42FT S & 75FT W/O C/L INT	CY 8811
BASELINE (1975)	51.098	RDBM TAG IN SO CB 2FT W/O BCR @ SE COR SOUTH ST & PALO VERDE AVE 42FT S & 65FT E/O C/L INT	CY 8812
BASELINE (1975)	26.521	RDBM TAG IN S CB 1FT W/O BCR @ SE COR PALO VERDE AVE & WARDLOW RD 40FT S & 64FT E/O C/L INT	CY 8814
BASELINE (1975)	68.276	CS MON IN WELL 1FT BK OF WK @ NE COR ALONDRA BLVD & CLARK AVE 55FT N & 52FT E/O C/L INT	CY 9285
BASELINE (1975)	69.639	LS TAG IN CB 11FT W/O BCR @ NW COR ALONDRA BLVD & VIRGINIA AVE 54FT W & 40FT N/O C/L INT (MKD LS 2428)	CY 9286
BASELINE (1975)	69.183	RAMSET CTR CB RET @ NE COR ALONDRA BLVD & LAKEWOOD BLVD 42FT N & 57FT E/O C/L INT	CY 9287
BASELINE (1975)	68.079	L&BD 2FT E/O BCR @ NW COR ALONDRA BLVD & PITTS AVE 42FT N & 39FT W/O C/L INT	CY 9288
BASELINE (1975)	66.223	CS MON IN WELL 1FT BK OF WK @ NE COR ALONDRA BL & DOWNEY AVE 51FT N & 59FT E/O C/L INT MKD (BM 6-10A)	CY 9289
BASELINE (1975)	68.953	L&BN 6FT N/O BCR @ NW COR ALONDRA BLVD & ORIZABA AVE 73FT N & 28FT W/O C/L INT	CY 9290
BASELINE (1975)	68.385	L&BD IN CTR OF CB RET @ NE COR ALONDRA BLVD & PARAMOUNT BLVD 54FT N & 51FT E/O C/L INT	CY 9291

QUAD-YEAR	ELEV	DESCRIPTION (INCLUDE QUAD AND YEAR IN DESCRIPTION)	BM NUMBER
BASELINE (1975)	68.134	CS MON FL IN S WALL C B @ NW COR PARAMOUNT BLVD & ALONDRA BLVD 42FT W & 120FT N/O C/L INT MKD (BM 6-11B 1975)	CY 9292
BASELINE (1975)	72.392	CS MON 1FT BK OF WK CTR OF CB RET @ SW COR PARAMOUNT BLVD & COMPTON BLVD 56FT W & 50FT S/O C/L INT MKD (BM 6-13A 1970)	CY 9293
BASELINE (1975)	72.275	L&BN IN N CB COMPTON BLVD 32FT N & 50FT W/O C/L INT VERMONT AVE	CY 9301
BASELINE (1975)	69.682	L&BD CTR CB RET @ SE COR COMPTON BLVD & MINNESOTA AVE 36FT S & 43FT E/O C/L INT	CY 9302
BASELINE (1975)	69.846	L&BD IN N CB COMPTON BLVD 32FT N & 39FT W/O C/L INT MINNESOTA AVE	CY 9303
BASELINE (1975)	68.803	CSBM MON IN WELL 1FT BK OF WK @ W EDGE OF DRIVEWAY TO FIRE STATION NO 31 210FT E & 41FT N/O C/L INT COMPTON BLVD & GARFIELD AVE MKD (BM 6-14A)	CY 9304
BASELINE (1975)	69.553	L&T N CB COMPTON BLVD 30FT N & 58FT E/O C/L INT TEXACO AVE	CY 9305
BASELINE (1975)	69.703	L&T 1FT W/O BCR @ SW COR COMPTON BLVD & TEXACO AVE 61FT W & 32FT S/O C/L INT	CY 9306
BASELINE (1975)	68.031	CSBM MON IN WELL 3FT W/O CB FACE 59FT S & 34FT W/O C/L INT COMPTON BLVD & ORANGE AVE MKD (BM 6-15A)	CY 9307
BASELINE (1975)	88.380	LAFC MON IN E ABUT @ SE COR COMPTON BLVD & BR OVER LA RIVER 32FT S C/L MKD (BM 4-26)	CY 9308
BASELINE (1975)	68.675	L&T CTR CB RET @ NE COR GIBSON AVE & COMPTON BLVD 24FT E & 35FT N/O C/L INT	CY 9309
BASELINE (1975)	68.482	L&BN IN S CB COMPTON BLVD 41FT S & 11FT W/O C/L PROD HARRIS AVE TO THE N	CY 9311
BASELINE (1975)	68.406	L&BN 1FT W/O BCR @ NW COR COMPTON BLVD & HARRIS AVE TO THE N 36FT W & 32FT N/O C/L INT	CY 9312
BASELINE (1975)	91.787	LAFC MON FL IN WK @ SW END BRDG NO B977 OVER SAN GABRIEL RIVER 41FT S/O C/L ALONDRA BLVD MKD (BM 075-00877 1974)	CY 9375
BASELINE (1975)	89.829	PK N IN CONC CB @ SE END BRDG NO B977 OVER SAN GABRIEL RIVER 37FT S/O C/L ALONDRA BLVD	CY 9376

QUAD-YEAR	ELEV	DESCRIPTION (INCLUDE QUAD AND YEAR IN DESCRIPTION)	BM NUMBER
BASELINE (1975)	73.027	CS MON FL IN S WALL C B @ NW COR STUDEBAKER RD & ALONDRA BLVD 43FT W & 110FT N/O C/L INT MKD (BM 9-3C)	CY 9377
BASELINE (1975)	72.026	L&BR CTR OF CB RET @ SE COR ALONDRA BLVD & STUDEBAKER RD 53FT E & 53FT S/O C/L INT	CY 9378
BASELINE (1975)	70.521	RDBM TAG 3FT S/O BCR @ SE COR STUDEBAKER RD & ENTR RD TO CERRITOS COLLEGE RECEIVING 50FT S & 42FT E/O C/L INT	CY 9379
BASELINE (1975)	68.595	CS BM MON FL IN S WALL C B @ SW COR STUDEBAKER RD & 166TH ST 69FT S & 43FT W/O C/L INT MKD (BM 9-4A 1975)	CY 9380
BASELINE (1975)	63.839	RDBM TAG IN S WALL C B @ NE COR STUDEBAKER RD & ON RAMP TO ARTESIA FWY (91) ON S SIDE FWY 43FT N & 43FT E/O C/L INT	CY 9381
BASELINE (1975)	61.100	CS BM MON FL IN E WALL C B @ NW COR ARTESIA BLVD & STUDEBAKER RD 47FT N & 151FT W/O C/L INT 75FT W/O BCR MKD (BM 9-6C 1965)	CY 9382
BASELINE (1975)	55.814	CS BM MON FL IN S WALL C B 5FT N/O BCR @ NW COR STUDEBAKER RD & 183RD ST 69FT N & 43FT W/O C/L INT MKD (BM 9-7B 1975)	CY 9383
BASELINE (1975)	55.792	L&T CTR CB RET @ SE COR STUDEBAKER RD & 183RD ST 50FT S & 54FT E/O C/L INT	CY 9384
BASELINE (1975)	69.732	LAFC MON FL IN WK @ W END BRDG NO B972 OVER SAN GABRIEL RIVER 42FT S/O C/L SOUTH ST MKD (BM 074-02797 1974)	CY 9385
BASELINE (1975)	25.209	CITY OF LONG BEACH MON IN WELL @ C/L INT PALO VERDE AVE & WARDLOW RD MKD (C L B 1958 RE 3111)	CY 9387
BASELINE (1975)	24.072	RAMSET 1FT S/O BCR @ SE COR PALO VERDE AVE & METZ ST 30FT E & 57FT S/O C/L INT	CY 9388
BASELINE (1975)	25.388	LAFC MON FL IN CB 52FT S/O BCR @ SW COR LOS COYOTES DIAG & SPRING ST 137FT S & 37FT W/O C/L INT MKD (BM 120-81 1961)	CY 9389
BASELINE (1975)	23.078	LAFC MON FL IN CB 75FT S/O BCR @ SW COR BELLFLOWER BLVD & SPRING ST 40FT W & 140FT S/O C/L INT MKD (BM 120-82 1961)	CY 9390
BASELINE (1975)	22.969	CITY OF LONG BEACH MON IN WELL 8IN DN @ C/L INT SPRING ST & CHARLEMAGNE AVE MKD (C L B 1968 KE 3111)	CY 9391

QUAD-YEAR	ELEV	DESCRIPTION (INCLUDE QUAD AND YEAR IN DESCRIPTION)	BM NUMBER
BASELINE (1975)	12.522	CS MON IN VERT FACE WALL @ SE COR SPRING ST UNDERPASS & MAIN RNWY OF L B AIRPORT 34FT S/O C/L SPRING ST 3FT ABOVE CB MKD (BM 8-39B 1965-USE CTR PUNCH MARK)	CY 9392
BASELINE (1975)	13.468	CS BM MON IN VERT FACE WALL @ NW COR SPRING ST UNDERPASS & MAIN RNWY OF L B AIRPORT 34FT N/O C/L SPRING ST 3FT ABOVE CB MKD (BM 8-396 1965-USE CTR PUNCH MARK)	CY 9393
BASELINE (1975)	53.634	L&T S WALL C B 34FT N/O BCR @ NW COR CHERRY AVE & WARDLOW RD 88FT N & 40FT W/O C/L INT	CY 9394
BASELINE (1975)	64.295	L&BR 17FT W/O BCR @ NW COR WARDLOW RD & WALNUT AVE 50FT W & 28FT N/O C/L INT	CY 9395
BASELINE (1975)	29.292	L&BN @ BCR @ SE COR PALO VERDE AVE & HARCO ST 30FT E & 58FT S/O C/L INT MKD (KN 233)	CY 9396
BELLFLWR (1975)	54.508	L&RCE TAG NO 12795 1FT N/O BCR @ NE COR PALO VERDE AVE & ANDY ST 55FT N & 32FT E/O C/L INT	CY 9397
BASELINE (1975)	49.700	L&T 9FT W BCR @ NW COR CARSON ST & LAKEWOOD DR 50FT W & 35FT N C/L INT	CY 9399
BASELINE (1975)	39.870	L&BR CTR CB RET @ SW COR FACULTY AVE & CARSON ST 33FT W & 48FT S C/L INT	CY 9400
BASELINE (1975)	38.302	PK & L NR S END E ABUT CONC BR 50FT S C/L CARSON ST & 500FT E C/L CLARK AVE	CY 9401
BASELINE (1975)	67.287	CITY OF LONG BEACH MON 1FT BK/O CB @ NE COR CARSON ST & CHERRY AVE 7FT W/O BCR 45FT N & 77FT E/O C/L INT MKD (CLB BM 444 1972)	CY 9416
BASELINE (1975)	67.641	L&BR CTR CB RET @ SW COR CARSON ST & CHERRY AVE 50FT S & 60FT W/O C/L INT	CY 9417
BASELINE (1975)	53.637	L&T S WALL C B 34FT N/O BCR @ NW COR CHERRY AVE & WARDLOW RD 88FT N & 40FT W/O C/L INT	CY 9418
BELLFLWR (1975)	56.217	CITY OF LONG BEACH MON FL 1FT N/O BCR @ NE COR PARAMOUNT BLVD & 63RD ST 40FT N & 40FT E C/L INT MKD (LBBM H 72 1962)	CY 9419
BELLFLWR (1975)	61.337	RAMSET 12FT E/O BCR @ SE COR PARAMOUNT BLVD & 68TH ST 69FT E & 20FT S/O C/L INT	CY 9420
BELLFLWR (1975)	44.121	RAMSET 1FT S/O BCR @ SW COR ATLANTIC AVE & MARKET ST 30FT W & 41FT S/O C/L INT	CY 9421

QUAD-YEAR	ELEV	DESCRIPTION (INCLUDE QUAD AND YEAR IN DESCRIPTION)	BM NUMBER
BELLFLWR (1975)	44.291	BUTTON HEAD MON IN HAND HOLE DN 5IN @ B/W ON N E COR ATLANTIC AVE & MARKET ST 40FT E & 33FT N/O C/L INT	CY 9422
BELLFLWR (1975)	64.479	L&T IN CTR CB RET @ SE COR ALONDRA BLVD & HUNSAKER AVE 50FT S & 52FT E/O C/L INT	CY 9425
BELLFLWR (1975)	64.345	RDBM TAG IN N CB 35FT E/O BCR @ NE COR ALONDRA BLVD & ORANGE AVE 40FT N & 97FT E/O C/L INT	CY 9426
BELLFLWR (1975)	66.441	L&T CTR CB RET @ NE COR ALONDRA BLVD & GARFIELD AVE 48FT N & 52FT E/O C/L INT	CY 9427
BELLFLWR (1975)	67.870	L&BR CTR CB RET @ NW COR ALONDRA BLVD & COLORADO AVE 46FT N & 40FT W/O C/L INT	CY 9428
BELLFLWR (1975)	63.425	LACE TAG IN CONC CB 30FT E/O BCR @ NE COR BEACH ST & WOODRUFF AVE 18FT N & 80FT E/O C/L INT	CY 9429
BELLFLWR (1975)	67.993	RDBM TAG 1FT W/O BCR @ NW COR FLORA VISTA ST & VIEW PARK AVE 49FT W & 20FT N/O C/L INT	CY 9430
BELLFLWR (1975)	60.574	RDBM TAG 2FT E/O BCR @ NE COR DEL AMO BLVD & ORANGE AVE 42FT N & 50FT E/O C/L INT	CY 9432
BELLFLWR (1975)	22.975	CITY OF LONG BEACH MON IN OUT IN DN @ C/L INT SPRING ST & CHARLEMAGNE AVE (CLB 1968 RE 3111)	CY 9433
BELLFLWR (1975)	27.429	RDBM TAG IN S WALL CATCH BASIN 7FT N/O BCR @ NW COR CHARLEMAGNE AVE & WARDLOW RD 18FT W & 73FT N/O C/L INT	CY 9434
BELLFLWR (1975)	33.801	L&T 0.5 W/O BCR @ NW COR CONANT ST & CHARLEMAGNE AVE 50FT W & 28FT N/O C/L INT	CY 9435
BELLFLWR (1975)	37.330	L&T IN N CB NR CTR OF CURVE CHARLEMAGNE AVE & PARKCREST ST ON PROD OF W CB CHARLEMAGNE AVE & 5FT S/O C/L PROD PARKCREST ST	CY 9436
BELLFLWR (1975)	37.451	L&N 3FT E/O BCR @ SW COR PARKCREST ST & CHARLEMAGNE AVE 15FT S & 77FT W/O C/L INT	CY 9437
BASELINE (1975)	38.314	L&BR CTR CB RET @ SW COR CARSON ST & CLARK AVE 34FT W & 49FT S/O C/L INT	CY 9438
BASELINE (1975)	55.653	RDBM TAG 1FT W/O C B SD CB SERVICE RD CARSON ST @ LEVELSIDE AVE 60FT N & 5FT E C/L PROD	CY 9534
BASELINE (1975)	55.747	RDBM TAG IN N CB SERVICE RD CARSON ST 3FT E/O C B 83FT N & 44FT W/O C/L INT LEVELSIDE AVE	CY 9535

QUAD-YEAR	ELEV	DESCRIPTION (INCLUDE QUAD AND YEAR IN DESCRIPTION)	BM NUMBER
BASELINE (1975)	60.346	RDBM TAG @ NE COR CARSON ST & PARAMOUNT BLVD 79FT N & 42FT E/O C/L INT	CY 9536
BASELINE (1975)	60.577	RDBM TAG @ SW COR CARSON ST & PARAMOUNT BLVD 42FT S & 68FT W C/L INT	CY 9537
BASELINE (1975)	22.705	RDBM TAG IN W CB WOODRUFF AVE @ SW COR SPRING ST 84FT S & 44FT W C/L INT	CY 9538
BASELINE (1975)	22.791	RDBM TAG IN E CB WOODRUFF AVE @ SE COR SPRING ST 84FT S & 44FT E C/L INT	CY 9539
BASELINE (1975)	21.546	RDBM TAG 1FT W BCR @ NW COR SPRING ST & PALO VERDE AVE 42FT N & 58FT W C/L INT	CY 9540
BASELINE (1975)	22.150	RDBM TAG 1FT E BCR @ NE COR SPRING ST & & PALO VERDE AVE 42FT N & 58FT E C/L INT	CY 9541
BELLFLWR (1975)	52.766	RDBM TAG IN W/LY CB SERVICE RD 10FT N/O BCR @ NE COR C.B. 65FT N & 86FT W/O C/L INT ATLANTIC AVE & HARDING ST	CY 9646
BELLFLWR (1975)	49.752	RDBM TAG IN S/WLY COR CONC PAD 91FT E & 88FT N/O C/L INT ATLANTIC AVE & SOUTH ST	CY 9647
BELLFLWR (1975)	48.945	RDBM TAG IN WALK TO BANK 48FT W & 87FT N/O C/L INT ATLANTIC AVE & SOUTH ST	CY 9648
BELLFLWR (1975)	59.274	L&BN IN NE COR C. B. @ SW COR GARFIELD AVE & JACKSON ST 60' W & 30' S/O C/L INT (TO THE W) STMPD (BM)	CY 9994
BELLFLWR (1975)	59.910	L&BN IN CTR C. B. IN S CB @ SE COR GARFIELD AVE & JACKSON ST (TO THE E) 27' S & 90' E C/L INT	CY 9995
BELLFLWR (1975)	57.565	CITY OF LONG BEACH BM MON IN E CB 40' E C/L GARFIELD AVE & 48' S/O L.A. CO. LINE 6' N/O C.B. MKD (148-1966)	CY 9996